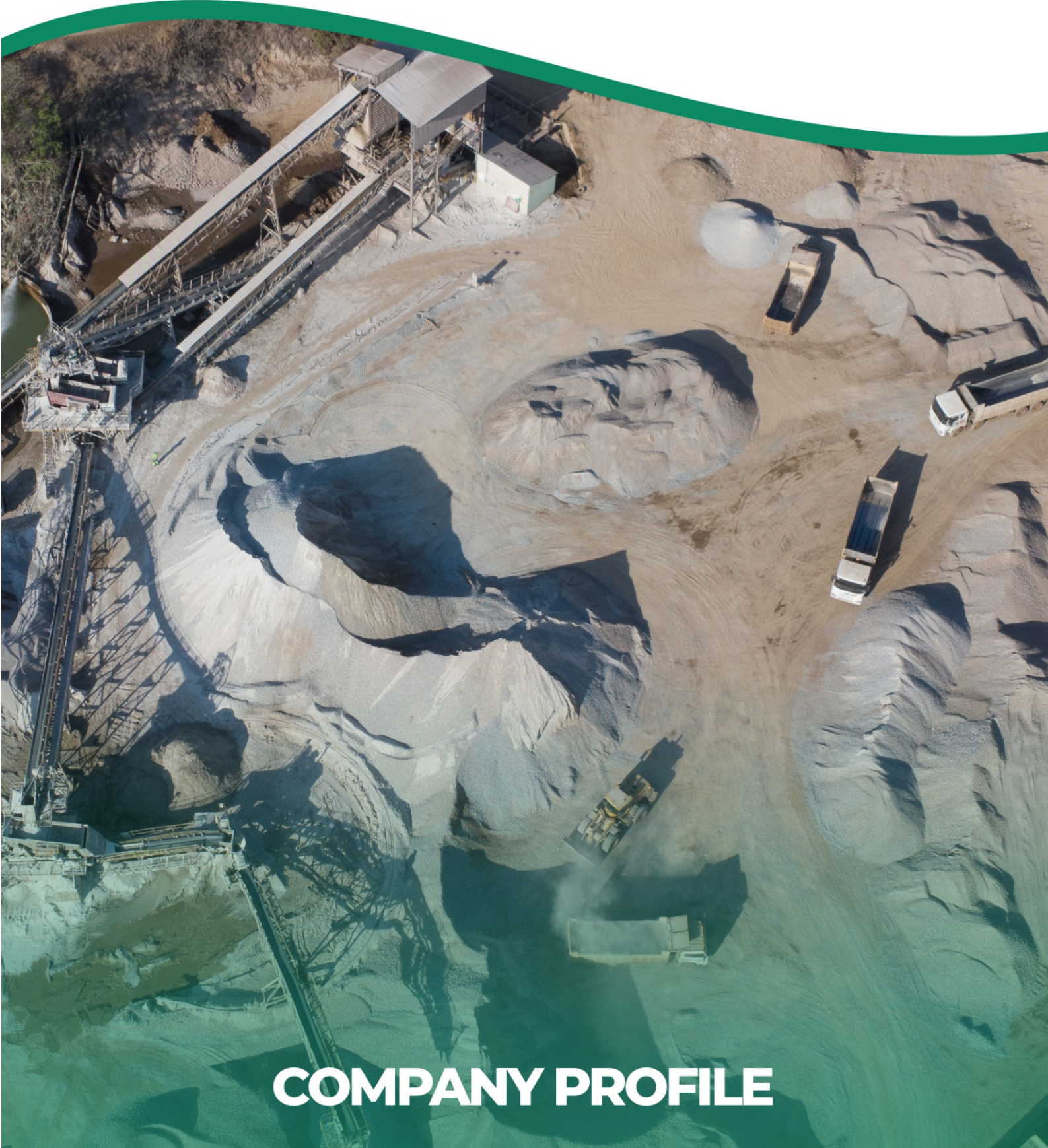




Formerly Lafarge
Cement Zimbabwe

Quality through
generations



COMPANY PROFILE

OUR MISSION



OUR VALUES



COLLABORATION

We believe in the power of working together. We are committed to communicate openly without fear. We commit to work cross functionally to achieve common goals.



AGILITY & PROACTIVENESS

Our uniqueness is anchored on our ability to be proactive and agile. We commit to quick decision making, without compromising on the quality of our decisions. We commit to having the courage to challenge the status quo. We commit to proactively anticipate change.



FAIRNESS

High performance and a results focus underpins everything we do. We commit to delivering results every time. Accountability is clear and personal. We commit to continuous improvement in order to enhance performance.



PERFORMANCE & RESULTS DRIVEN

Fairness and equity are demonstrated consistently in all our interactions. We strive to achieve a win-win situation in all our interactions with all our stakeholders. We commit to be consistent in the application of our decisions.

CONTENTS

KHAYAH CEMENT LIMITED
COMPANY PROFILE

1. Company Mission	01
2. Our Values	02
3. About Khayah	04
4. Khayah at Glance	05
5. Our Products	06 - 14
6. Supporting Communities	15 - 16

Quality Through Generations

For nearly six decades, we at Khayah Cement, formerly Lafarge, have been trusted by generations of Zimbabweans. We deliver high-quality building and agricultural solutions and have improved our product delivery since our rebranding. We invest in the latest technology for precision and consistency, and constantly innovate to meet the evolving needs of the construction and agricultural sectors.

We are a market leader in Zimbabwe, committed to quality and sustainability. We offer a variety of products including cement, agricultural lime, aggregates, and dry mortar products. Our current capacity allows us to produce 700,000 tonnes, a significant increase from previous decades. Through our operations, we employ over 300 people and create thousands of jobs in our value chain. We pledge to lead in sustainable operations, minimizing our impact on the environment and communities.



Khayah cement at a glance

Khayah Cement, a key player in Zimbabwe's construction industry since its 2023 rebranding, is known for high-quality cement products and a commitment to sustainability. Our focus on innovation and continuous improvement positions us as a reliable partner for all construction projects. We prioritize environmental stewardship and community development, setting us apart as a socially conscious company making a positive impact in the construction sector.

Our rebranding reflects our values and vision for the future. The new brand identity symbolizes our dedication to excellence, creativity, and customer satisfaction. Through this rebranding, we aim to strengthen our market position, expand our reach, and stay true to our core principle of quality through generations.



Quality through generations

We stay competitive by continually improving our products and services. Our dedicated R&D team works tirelessly to enhance our cement quality and efficiency, ensuring our customers can rely on us for sustainable construction materials. We actively seek customer feedback to tailor our offerings, solidifying our commitment to customer satisfaction.

We set new safety and health standards in the industry through rigorous protocols and cutting-edge technologies. Our sustainability commitment extends beyond our products, as we strive to minimise our carbon footprint through responsible practices. By prioritising employee well-being and environmental care, we aim to exceed industry expectations. We provide a supportive and inclusive work environment, fostering a culture of collaboration and empowerment. We offer ongoing training and development opportunities, ensuring our team members excel in their roles.

Thank you for coming home



Quality through generations

www.khayahcement.co.zw



Our Products

At Khayah, we produce a diverse range of products to meet the dynamic needs of all customers. Our products cater to various construction projects, from residential buildings to large-scale infrastructure developments. We pride ourselves on delivering durable, high-quality products. With a customer-centric approach, we continuously adapt to the ever-changing market demands. Whether for residential, commercial, or industrial use, Khayah Cement provides the perfect solution for all construction needs.

Quality through generations



SupaFix



**The Ultimate
Tiling Solution.**

DON'T JUST FIX IT, SUPAFIX IT

The Ultimate Tiling Solution.



SupaFix Porcelain & Ceramic Tile Adhesive

SupaFix adhesives are cement based tile adhesives with a special blend of additives that increase initial adhesion, allows greater exibility and improved coverage. The SupaFix adhesives are available in two classes, PorcelainFix & CeramicFix. PorcelainFix is used when applying porcelain floor and wall tiles while CeramicFix is for Xing ceramic tiles.



SupaFix Tile Grout - Tile Filler

For effective filling, sealing and buffering of set tiles on the floor and/or wall, SupaFix Grey Tile Grout or SupaFix White Tile Grout is the best. The finished tiling work has improved aesthetic look when SupaFix (Grey/ White) Tile Grout is used as the finishing touch.



SupaFix Bonding Liquid

For superior interior and exterior bonding strength, try the new ready-to-use SupaFix Bonding Liquid for tile adhesives and grout. The premium Lafarge quality guaranteed SupaFix Bonding Liquid is water-resistant and will ensure a bond that will laste lifetime.

Dry Mortars



Snolime is a traditional limewash paint made from lime. It is suitable for painting houses (exterior), animal habitats and crop storage facilities. It is also used for putting markings on sports fields.



impermo is a water repellent product that Lafarge produces in powder form from mixing with cement to produce durable, waterproof renderings. It is used in the construction of water-bearing structures such as swimming pools, water reservoirs, septic tanks and dip tanks. It is also used in structures where moisture should not be allowed in, such as greenhouses and basements.



Colorbrite is a decorative pigmented lime-based paint for painting the interior of houses. It is produced by Khayah in a variety of colors, including light blue, light green, mist grey, rose pink, primrose, white, blue, green, ivory and corn.



TectorPlast Plastering Mortar

TectorPlast is a superior plastering product for dressing brickwork with a durable, high-quality cement-based plaster. It's ideal for use before painting or applying TectorPlast SkimCoat. TectorPlast helps avoid issues like peeling and weak plastering for both interiors and exteriors. Ready to use, just add water to the perfectly proportioned mix! Available in both coarse and fine options, TectorPlast includes special additives for easy workability and spreadability. It offers wide coverage and enduring strength, thanks to the naturally superior quality of Khayah cement.

Aggregates

Pieces of rock used in the production of mortar and concrete and in the construction of roads and railways.

At Khayah Cement, we are a key producer of construction aggregate materials in the country. Our plant has an annual capacity to produce up to 200,000 metric tonnes. Leveraging state-of-the-art facilities and advanced production techniques, we ensure our aggregates meet the highest quality standards. Our aggregates are ideal for various applications, including road construction, concrete production, and landscaping. Whether you need fine or coarse aggregates, Khayah Cement provides the best materials for your construction projects..

Khayah Cement Limited produces and sell the following aggregates:

- Crusher run
- 6mm stones
- 20mm stones (3/4 inch)
- Washed sand



Crusher run



6mm Stone



3/4 Stone



Washed Sand

Quality through generations



Portland Cement

Used for general purpose and structural concrete applications (columns, beams, slabs, foundation footings, concrete walls, lintels etc)



SupaSet

Used for brick and blockmaking, precast, operations, structural concrete applications and dam/ reservoir construction.

Waterproofing Cement



WaterShield WaterShield, is a unique waterproofing cement, is exclusively manufactured by Khayah in the country. It helps protect homes from moisture and water, promoting damp-free, long-lasting construction. WaterShield defends your property's value, keeps your home free from mould and mildew, and offers higher strength than comparable products. This makes it effective for special foundations. It's also the ideal cement for pool construction or water-based foundations.



SupaGrow

Better Soil. Bigger Yield.





Better Soil. Bigger Yield.

At Khayah, we're proud to contribute to the breadbasket of the nation with our product, Supagrow. This repurposed, pulverised, non-clinkable limestone is a cost-effective solution for improving soil pH and increasing nutrient availability for crops. It's a popular choice among farmers aiming to boost yields, thereby playing a crucial role in the agricultural sector.





Supporting Communities



Empowering Education, Cultivating Skills, and Nurturing a Strong Workforce

At Khayah Cement, we champion Corporate Social Responsibility (CSR). We're committed to education and skill development, positively impacting hundreds of students across Zimbabwe through financial support and our Graduate Trainee Programme.

One of our key CSR initiatives is providing school fees for over 400 students across Zimbabwe, ensuring that bright students can pursue their academic aspirations. We also cultivate skills and retain local talent through our Graduate Trainee Programme, providing practical skills and experience within our plant.

In addition to these, we contribute to donations and participate in cleanup campaigns, demonstrating our commitment to the community and the environment. Through these initiatives, we aim to make a positive impact on society and the environment.





KHAYAH

Formerly Lafarge
Cement Zimbabwe

*Quality through
generations*